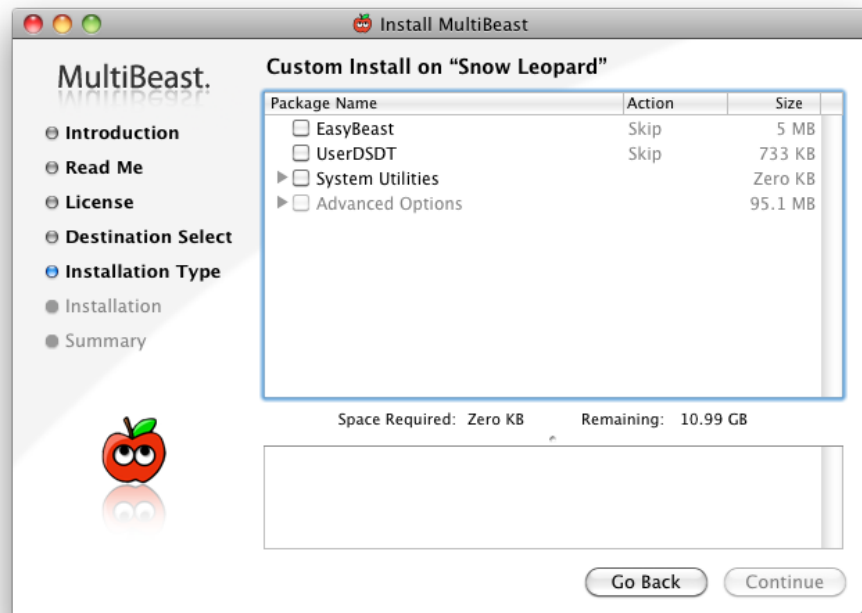




MultiBeast.



MultiBeast is an all-in-one post-installation tool designed to enable boot from hard drive, and install support for Audio, Network, and Graphics. It contains two different complete post-installation solutions: EasyBeast and UserDSDT. In addition it includes System Utilities to rebuild caches and repair permissions and a collection of drivers, boot loaders, patched kernels, boot time config files and handy software.

This document will reference all of the features of MultiBeast, as described inside the installer itself. The iBoot + MultiBeast guide is available at the [tonymacx86 Blog](#).

Please read all of the descriptions carefully. You may run MultiBeast as often as you like, but keep in mind that it will not uninstall items, just overwrite them.

tonymacx86 & MacMan
www.tonymacx86.com



iBoot

Plus MultiBeast

1. Follow all [Tips & Recommendations](#)
2. Install using iBoot + Retail DVD
3. Boot with iBoot
4. Set up Computer
5. Run Combo Update (if needed) DON'T REBOOT
6. Run MultiBeast
7. Reboot

Thanks to the [Chameleon](#) team, [netkas](#), [AsereBLN](#), [Cheetha.net](#), and [cVaD](#). for their contributions that makes this tool possible.

Additional thanks to the tonymacx86 community for their testing and contributions to this work. Special thanks to Lnx2Mac, adamsmasher and thelostswede.



tonymacx86 Forum.



EasyBeast

EasyBeast is a DSDT-free solution for any Core, Core 2 or Core i system. It installs all of the essentials to allow your system to boot from the hard drive. Does not include any Network or Sound drivers or Graphics support besides Chameleon GraphicsEnabler. Includes Chameleon 2.0 RC4 by AsereBLN 1.1.9, fakesmc, EvOreboot, JMicron36xATA, JMicron36xSATA, LegacyAppleRTC, NullCPUPowerManagement, IOUSBFamily Rollback, 32-Bit com.apple.boot.plist, and iMac11,1 sbios.plist. Install with System Utilities tasks.



UserDSDT

UserDSDT is a solution for those who have their own pre-edited DSDT.aml on the desktop. Installs your DSDT.aml, Chameleon 2.0 RC4 by AsereBLN 1.1.9, fakesmc, 32-Bit com.apple.boot.plist and iMac11,1 sbios.plist. The system will be bootable from the hard drive and ready for sleep with all hardware recognized in System Profiler. Does not include any Network or Sound drivers or Graphics support besides Chameleon GraphicsEnabler. Install with System Utilities tasks.

System Utilities

Repair Disk Permissions and/or Rebuild Kext Caches. Run after installing any choices above, installing any kexts in Advanced Options or manually deleting kexts

Rebuild Caches

Rebuild Caches on /Extra/Extensions & /System/Library/Extensions. Use after installing or deleting kexts.

Repair Permissions

Repair Permissions on boot volume. Please be patient- this can take a good 4 minutes or more.

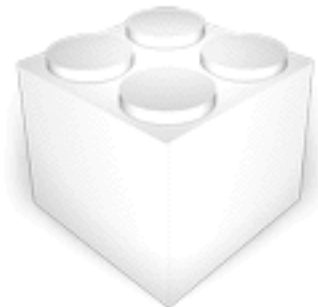


Advanced Options

Collection of drivers, boot loaders, patched kernels, boot time config files and handy software. If you're unsure, don't install anything in here. Advanced users may skip EasyBeast and UserDSDT to do an à la carte install using this collection.

Kexts

Kexts or kernel extensions provide additional functionality to the operating system. The kexts contained here provide either enhanced hardware support or are mandatory for non-DSDT based systems. Be sure to read the descriptions carefully before installation.





Audio

Collection of kexts to enable the on-board Audio on your system. Make sure to read the descriptions carefully and only install the correct files for your audio codec.

LegacyHDA

Enables audio for motherboards featuring the Realtek ALC888, ALC887/ALC888b, ALC889 or ALC885/ALC889a codecs. Make sure you only choose ONE LegacyHDA option. If you are not using a modified DSDT, you must also use ONE matching HDAEnabler. For 10.6.3+ compatibility, AppleHDA 10.6.2 Rollback is included with all non-889a codecs. Installed in /Extra/Extensions. Install with System Utilities tasks.

HDAEnabler

Required for LegacyHDA to work WITHOUT a DSDT and enable audio on motherboards featuring the Realtek ALC888, ALC887/ALC888b, ALC889 or ALC885/ALC889a codecs. Make sure you only choose ONE HDAEnabler option. Installed in /System/Library/Extensions. Install with System Utilities tasks.

VoodooHDA

VoodooHDA is an open source audio driver for devices compliant with the Intel High Definition Audio (HDA) specification, based primarily on code from the FreeBSD hdac driver. It is intended as an Intel-only replacement for AppleHDA. Enables sound without DSDT patching on 32/64-bit systems. Installed in /System/Library/Extensions. Install with System Utilities tasks.

VoodooHDA 0.2.1 / 0.2.2

Original VoodooProjects branch. Stable and latest beta versions.

VoodooHDA 0.2.56 / 0.2.61

EXPERIMENTAL versions of VoodooHDA known to work with more audio codecs. Will cause kernel panics if used in conjunction with AppleHDA. Backup and remove your AppleHDA.kext from /System/Library/Extensions before rebooting.

AppleHDA 10.6.2 Rollback

Fix for AppleHDA included in 10.6.3 or later that breaks the current audio solution of LegacyHDA + DSDT for ALC888, ALC887/ALC888b and ALC889. This will replace the 10.6.3+ AppleHDA.kext with unmodified 10.6.2 AppleHDA.kext to restore full functionality. Installed in /System/Library/Extensions. Install with System Utilities tasks.





Disk

Collection of kexts that provide enhanced hardware support for optical and disk drives.

IOAHCIBlockStorageInjector

Makes drives appear as internal. Installed in /Extra/Extensions.
Install with System Utilities tasks.

JMicron 36x (aka GSATA)

MacMan's JMicron 36x Suite of Kexts. Choose only the kexts you need.

JMicron36xATA

Enables the IDE port on the JMicron 36x (aka GSATA) chips. Supports optical and hard drives. Installed in /Extra/Extensions. Install with System Utilities tasks.

JMicron36xeSATA

Provides support for the SATA ports on JMicron 36x (aka GSATA) chips. Drives connected to these ports show on the desktop as External and can be hot swapped. Installed in /Extra/Extensions. Install with System Utilities tasks.

JMicron36xSATA

Provides support for the SATA ports on JMicron 36x (aka GSATA) chips. Drives connected to these ports show on the desktop as Internal and can NOT be hot swapped. Installed in /Extra/Extensions. Install with System Utilities tasks.



Graphics

Install to enable QE/CI full Graphics acceleration. Only install if the default GraphicsEnabler=Yes is not working correctly.

Enablers

Collection of kexts to enable Graphics Controllers on your system. Can be used instead of or in addition to GraphicsEnabler.

NVEnabler

Injects NVIDIA Graphics card information to enable full acceleration. Also known to solve TV-OUT and mirroring issues on NVIDIA cards. Installed in /Extra/Extensions. 32/64 bit. Install with System Utilities tasks.

ATY_Init

Injects graphics card information for ATI cards and is an alternative injector for NVIDIA cards. Choose either Vervet or Uakari Frame Buffer for ATI 5xxx cards. 32-bit only. Need to set GraphicsEnabler=No. Installed in /System/Library/Extensions. Install with System Utilities tasks.





PCI Root ID Fix

If the default GraphicsEnabler=Yes is not working correctly use the appropriate sub-choice to add the correct Kernel Flags for the boot loader installChameleon 2.0 RC4, adds PCIRootUID=1 to Kernel Flags in /Extra/com.apple.boot.plist. For PC-EFI 10.6, adds -pci1 to Kernel Flags in /Extra/com.apple.boot.plist.

ATI

Collection of kexts for supporting ATI graphics cards.



ATI 48xx Device Injector

Device ID injector that provides all device IDs for ATI 48xx cards. Installed in /Extra/Extensions. Install with System Utilities tasks.

ATI 48xx Patch for 10.6.3

Netkas.org package to get QE/CI on Radeon HD 48xx cards under 10.6.3 based on ATI4800 version 1.6.10. Includes MacMan's additional device id's. Installs patched ATI4800Controller and ATIRadeonX2000 to /System/Library/Extensions. Install with System Utilities tasks.

ATI 48xx Patch for 10.6.4

Netkas.org package to get QE/CI on Radeon HD 48xx cards under 10.6.4 based on ATI4800 version 1.6.16. Includes MacMan's additional device id's. Installs patched ATI4800Controller and ATIRadeonX2000 to /System/Library/Extensions. Install with System Utilities tasks.

ATI 48xx Patch for 10.6.4 Graphics Update

Netkas.org package to get QE/CI on Radeon HD 48xx cards under 10.6.4 based on ATI4800 version 1.6.18. Includes MacMan's additional device id's. Installs patched ATI4800Controller and ATIRadeonX2000 to /System/Library/Extensions. Install with System Utilities tasks.

Network

Collection of kexts to to enable on-board Ethernet. Install only ONE.

Realtek Gigabit Ethernet

Enables on-board ethernet for Realtek 8xxx chips. Installed in /System/Library/Extensions. Install with System Utilities tasks.

Realtek RTL8169 Kext

Official Realtek driver for 81xx Ethernet chips. 32-bit only.

RealtekR1000SL Kext

Open Source 32/64 bit driver for Realtek 81xx Ethernet chips.

Intel 82566 Family Gigabit Ethernet

Enables on-board ethernet for Intel Motherboards.





Non-DSDT Systems

Collection of mandatory kexts for systems **not** using a DSDT.

fakesmc

Netkas.org fakesmc.kext is the only absolutely mandatory kext, and is required for booting the system. Installed in /Extra/Extensions. Install with System Utilities tasks.

EvOreboot

If you don't have a DSDT, shutdown and reboot do not work without this kext. Installed in /Extra/Extensions. Install with System Utilities tasks.

LegacyAppleRTC.kext

Prevents a CMOS reset on reboot without a DSDT. Installed in /Extra/Extensions. NOTE: 32-bit only. Install with System Utilities tasks.

NullCPUPowerManagement

Disables AppleIntelCPUPowerManagement.kext to prevent kernel panic without proper HPET DSDT edits. Installed in /Extra/Extensions. Install with System Utilities tasks.

Miscellaneous

Collection of miscellaneous kexts that provide enhanced hardware support. Be sure to read the descriptions carefully before installation.

IOUSBFamily 10.6.2 Rollback

Replaces the current IOUSBFamily with an unmodified 10.6.2 IOUSBFamily to restore full functionality to non-DSDT systems running 10.6.3 or later. Installed in /System/Library/Extensions. Install with System Utilities tasks.



VoodooPS2Controller

Enables non-USB keyboard/touchpad and contains VoodooPS2Controller.kext and AppleACPIPS2Nub.kext. Installed in /Extra/Extensions. Install with System Utilities tasks.

Chameleon

Install ONE of the following options to make your drive bootable. Not necessary for a EasyBeast or User DSDT install.

Chameleon 2.0 RC4 by AsereBLN

Chameleon 2.0 RC4 + PC-EFI 10.5 by AsereBLN Version 1.1.9. This is based on Chameleon 2.0 RC4 with many new code improvements and features. Makes hard drive bootable and adds Operating System selection GUI with tonymacx86 Theme. Not necessary for a EasyBeast or User DSDT install.



PC-EFI 10.6 by netkas

Based on Chameleon 2.0 RC3 with many newer ATI graphics card device ids. Not necessary for a EasyBeast or UserDSDT install.



com.apple.boot.plist

The com.apple.boot.plist is read by Chameleon during startup to enable/disable special boot loader features.

32-bit Apple Boot Screen

Pre-edited standard 32-bit com.apple.boot.plist. Contains GraphicsEnabler=Yes, enabling most nVidia and some ATI Graphics cards without kexts, standard Apple Boot Screen and 32-bit mode kernel. Installed in /Extra.

32-bit GraphicsEnabler=No

Pre-edited standard 32-bit com.apple.boot.plist. Contains GraphicsEnabler=No, standard Apple Boot Screen and 32-bit mode kernel. Installed in /Extra.

64-bit Apple Boot Screen

Pre-edited standard 64-bit com.apple.boot.plist. Install ONLY if using a patched DSDT. Contains GraphicsEnabler=Yes, enabling most nVidia and some ATI Graphics cards without kexts, standard Apple Boot Screen and enables 64-bit kernel & kext mode. Installed in /Extra.

64-bit GraphicsEnabler=No

Pre-edited standard 64-bit com.apple.boot.plist. Contains GraphicsEnabler=No, standard Apple Boot Screen and 64-bit mode kernel. Installed in /Extra.

smbios.plist

A smbios.plist will identify your system as a specific Mac model and can enable system specific options like native SpeedStep support.

Mac Pro

This smbios.plist identifies your computer as a Mac Pro with Intel Quad-Core Xeon, Core i5 or Core i7 CPU. Installed in /Extra.

iMac

This smbios.plist identifies your computer as an iMac with a Core 2 Duo, Core i5 or Core i7 CPU. Either Core i option enables native SpeedStep support.

MacBook Pro

This smbios.plist identifies your computer as a current generation MacBook Pro. Installed in /Extra.

Themes

Themes for Chameleon boot loader GUI customization.

Standard Chameleon

Standard Chameleon theme. Installed in /Extra.

Standard PC-EFI 10.6

Standard PC-EFI 10.6 theme for Chameleon. Installed in /Extra.

tonymacx86 Theme

tonymacx86 theme for Chameleon. Installed in /Extra.



OSx86 Software

Helpful OSx86 Utilities and Tools. Installed in Applications folder.

Kext Helper b7

The drag n' drop kext installer Kext Helper b7 lets you install multiple kexts at once, and also repairs kext permissions and creates a script to tag cache rebuild. Installed in Applications folder.

Kext Utility

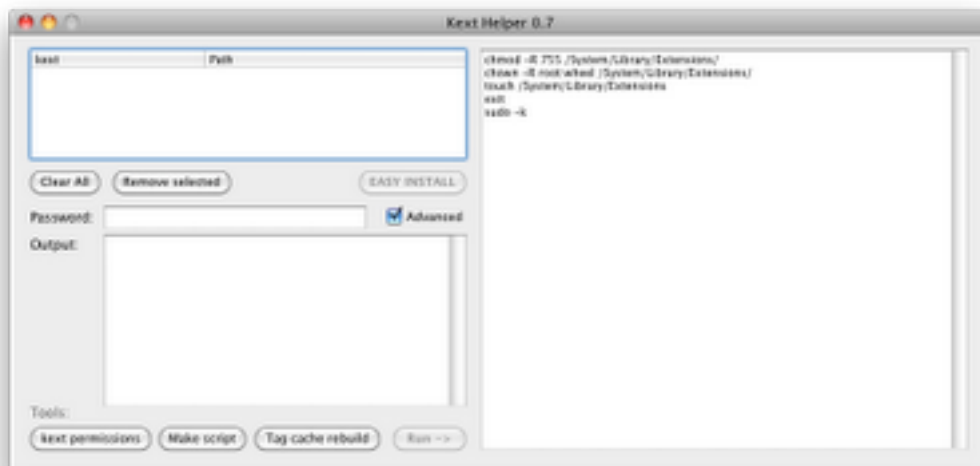
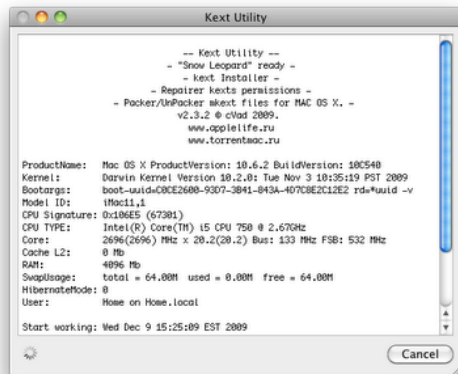
Installs kexts one at a time, and does 'full service' Extensions.mkext creation. The best feature of Kext Utility is its interface to create caches- you simply drag the Extensions folder directly on top of the icon in Applications folder or Dock. Installed in Applications folder.

MSR Tools

MSR Tools is a thermal sensor program that shows CPU info. In addition to live stepping, it also shows temperature readings, CPU MHZ values and mVolt values. NOTE: 32-bit only. Installed in Applications folder.

ShowAllFiles

ShowAllFiles enables display of all hidden files in Finder. Very useful for locating hidden boot files, mach_kernel, etc... Installed in Applications folder.





This tool was created for your personal use and may not be sold or re-distributed without the express written consent of tonymacx86 LLC.

This tool is provided "as is" without warranties of any kind, either expressed or implied, including, but not limited to, the implied warranties of merchantability and fitness for a particular purpose. The entire risk as to the quality and performance of this tool is with you. Should the tool prove defective, you assume the cost of all necessary servicing, repair or correction.

Please consider supporting further development with a contribution. Thanks in advance!

[Contribute](#)

The copyright to the original works contained within are retained by the original creators.

